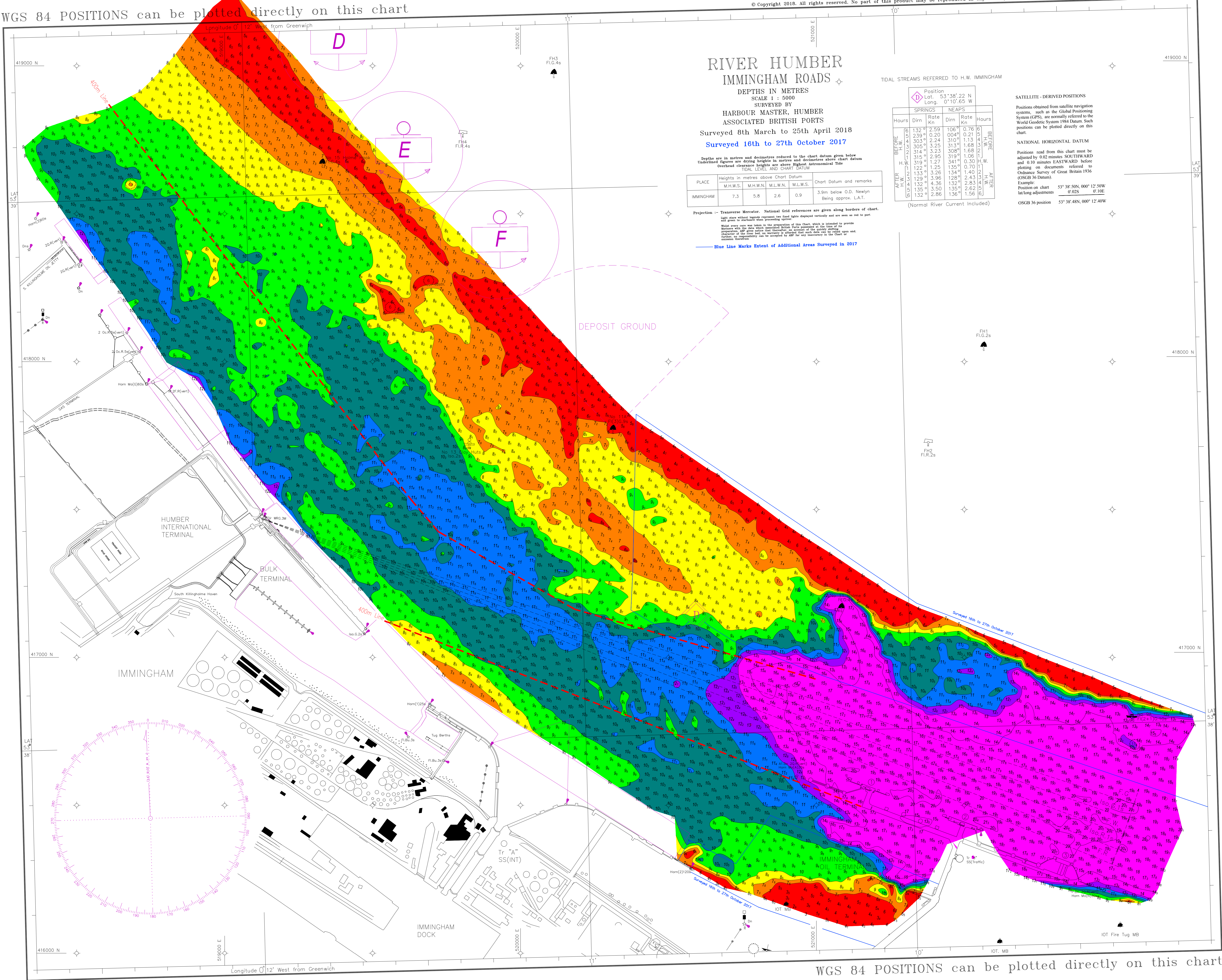


WGS 84 POSITIONS can be plotted directly on this chart

© Copyright 2018. All rights reserved. No part of this product may be reproduced in any form (including photocopying or by electronic means) without prior permission.



RIVER HUMBER IMMINGHAM ROADS

DEPTHS IN METRES
SCALE 1 : 5000
SURVEYED BY
HARBOUR MASTER, HUMBER
ASSOCIATED BRITISH PORTS
Surveyed 8th March to 25th April 2018
Surveyed 16th to 27th October 2017

Depths are in metres and decimetres reduced to the chart datum given below
Underlined figures are drying heights in metres and decimetres above chart datum
Overhead clearance heights are above Highest Astronomical Tide
TIDAL LEVEL AND CHART DATUM

PLACE	Heights in metres above Chart Datum				Chart Datum and remarks
	M.H.W.S.	M.H.W.N.	M.L.W.N.	M.L.W.S.	
IMMINGHAM	7.3	5.8	2.6	0.9	3.9m below O.D. Newlyn Being approx. L.A.T.

Projection: Transverse Mercator. National Grid references are given along borders of chart.

Light abbreviations legends represent sea and lights displayed vertically and are seen as red to port and green to starboard when proceeding upriver.

What every care was taken in the preparation of this chart, which is intended to provide accurate information for the use of the mariner, the publisher is not responsible for any error or omission, however, it is recommended that the mariner should verify the accuracy of the information by other means.

Blue Line Marks Extent of Additional Areas Surveyed in 2017

TIDAL STREAMS REFERRED TO H.W. IMMINGHAM

Position	SPRINGS		NEAPS		Hours
	Dirn	Rate	Dirn	Rate	
BEFORE H.W.	132°	2.59	106°	0.76	BEFORE H.W.
BEFORE H.W.	239°	0.20	004°	0.21	
BEFORE H.W.	303°	2.24	310°	1.13	
BEFORE H.W.	305°	3.25	313°	1.68	
BEFORE H.W.	314°	3.23	308°	1.68	
BEFORE H.W.	315°	2.95	319°	1.06	
AFTER H.W.	319°	1.27	341°	0.30	AFTER H.W.
AFTER H.W.	122°	1.25	155°	0.70	
AFTER H.W.	133°	3.26	134°	1.40	
AFTER H.W.	129°	3.96	128°	2.43	
AFTER H.W.	132°	4.36	133°	2.53	
AFTER H.W.	135°	3.50	135°	2.62	
AFTER H.W.	132°	2.86	136°	1.56	

SATELLITE - DERIVED POSITIONS
Positions obtained from satellite navigation systems, such as the Global Positioning System (GPS), are normally referred to the World Geodetic System 1984 Datum. Such positions can be plotted directly on this chart.

NATIONAL HORIZONTAL DATUM
Positions read from this chart must be adjusted by 0.02 minutes SOUTHWARD and 0.10 minutes EASTWARD before plotting on documents referred to Ordnance Survey of Great Britain 1936 (OSGB 36 Datum).

Example:
Position on chart 53° 38' 50N, 000° 12' 50W
lat/long adjustments 0.02S 0.10E

OSGB 36 position 53° 38' 48N, 000° 12' 40W

WGS 84 POSITIONS can be plotted directly on this chart